



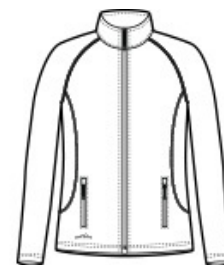
# Eddie Bauer® Ladies Smooth Fleece Base Layer Full-Zip. EB247



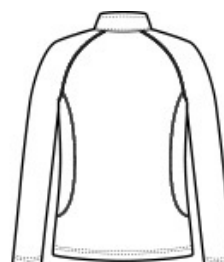
Built for versatility, this smooth-faced, brushed back base layer is sleek, low-profile and is adaptable to everything from outdoor adventures to indoor comfort. Contrast coverstitch details. Reverse coil zippers. Open cuffs and hem. Front zippered pockets. Contrast Eddie Bauer heat transfer logo on right hem. Made of 9.3-ounce, 100% polyester fleece.

### CARE INSTRUCTIONS

Machine Wash Cold, Inside Out With Like Colors, Do Not Use Fabric Softener, Only Non-Chlorine Bleach When Needed, Tumble Dry Low, Do Not Iron, Do Not Dry Clean.

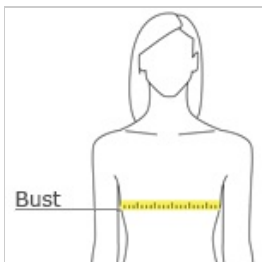


front



back

### HOW TO MEASURE



#### BUST

Measure under the arm and around the fullest part of the bust with arms down, keeping tape horizontal.

### SIZE CHART

	XS	S	M	L	XL	2XL	3XL	4XL
Size	2	4/6	8/10	12/14	16/18	20/22	24/26	28/30
Bust	32-33	34-35	36-37	38-40	41-43	44-46	47-49	50-52

### COLOR INFORMATION



Black  
PMS NTR BLACK



Iron Gate  
PMS 7540CP



River Blue  
PMS 533C

C