



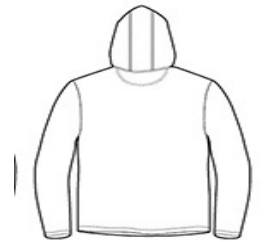
- 4.7-ounce, 100% filament polyester
- Moisture-wicking
- Anti-odor properties
- Snag resistant
- Unlined 3-piece hood with double-needle topstitch
- Tearaway label
- Back neck tape
- Pouch pocket
- Double-needle sleeves and hem

### CARE INSTRUCTIONS

Maximum washing temperature 30 c, inside out, with like colors. Only oxygen/non-chlorine bleach allowed. Tumble dry at low temperature, max 60 c. Do not iron. Do not dry clean.

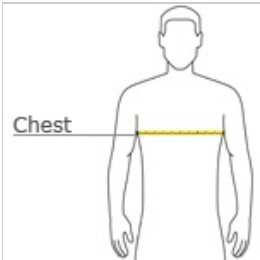


front



back

### HOW TO MEASURE



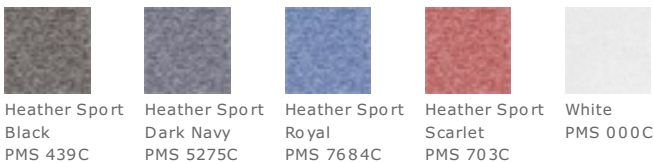
#### CHEST

With arms down at sides, measure around the upper body, under arms and over the fullest part of the chest.

### SIZE CHART

	S	M	L	XL	2XL	3XL
Chest	34-36	38-40	42-44	46-48	50-52	54-56

### COLOR INFORMATION



\*Not all sizes are available in every color.